



GMT MONTHLY MEMBERSHIP PROGRESS REPORT

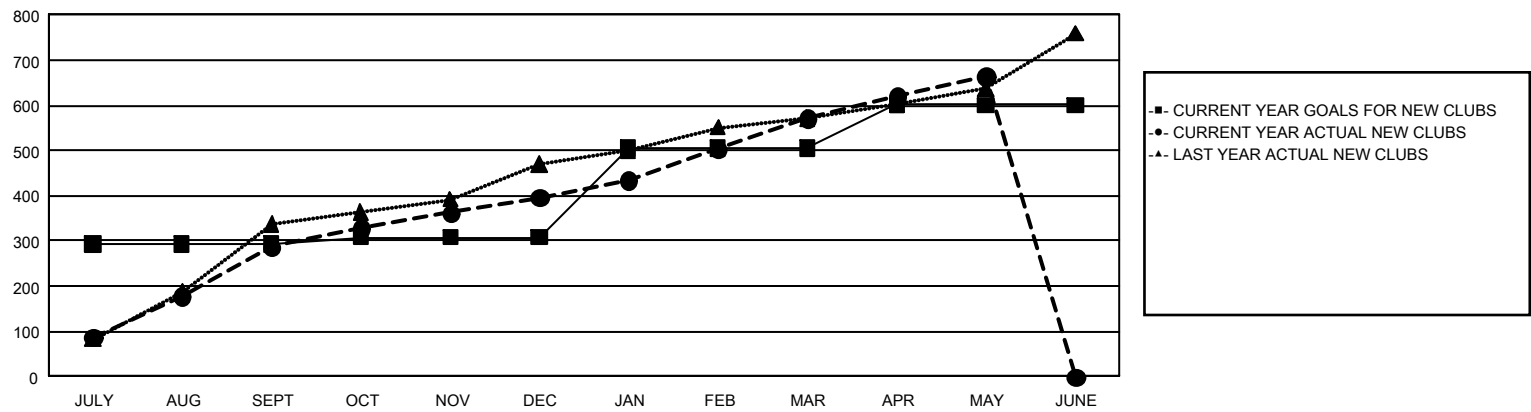
GAT Constitutional Area 6 - India

Results as of: 5/31/2025

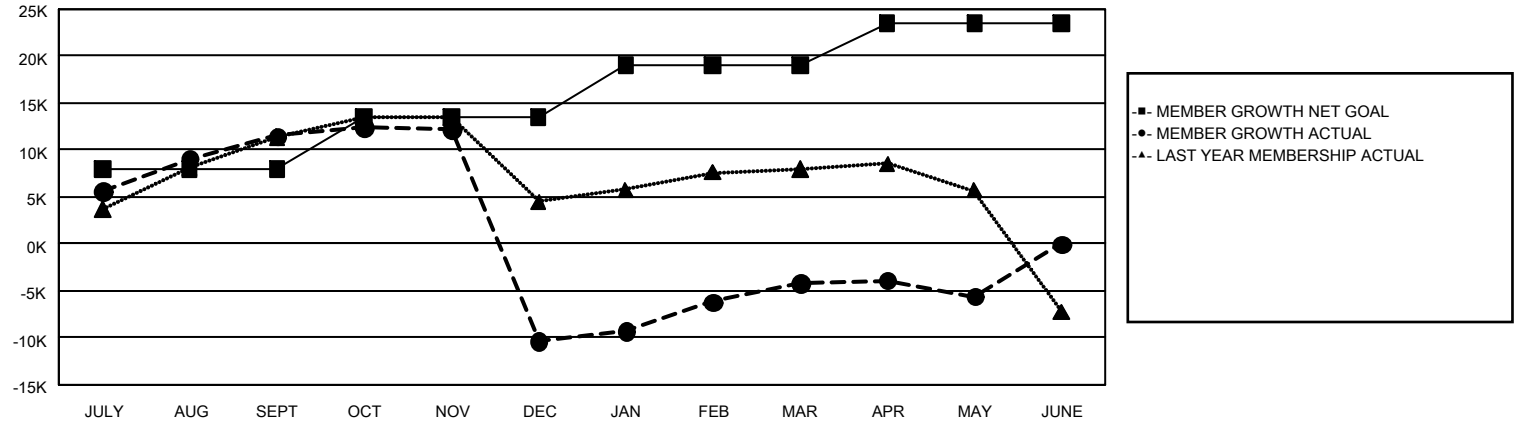
REPORT DOES NOT INCLUDE CLUBS IN UNDISTRICTED AREAS.

Clubs				Members			
RESULTS FOR 2024-2025				RESULTS FOR 2024-2025			
QUARTER	NEW CLUB GOAL	NEW CLUBS	DROPPED CLUBS	QUARTER	MEMBER GROWTH NET GOAL	MEMBER GROWTH ACTUAL	DROPPED MEMBERS ACTUAL (including transfers)
JULY/AUG/SEPT	293	287	72	JULY/AUG/SEPT	7,909	19,759	6,700
OCT/NOV/DEC	15	109	756	OCT/NOV/DEC	5,600	8,867	29,273
JAN/FEB/MAR	198	176	120	JAN/FEB/MAR	5,576	15,903	5,750
APR/MAY/JUNE	95	93	11	APR/MAY/JUNE	4,411	7,784	7,149

GOALS AND ACTUAL NEW CLUBS CUMULATIVE



GOALS AND ACTUAL MEMBERS CUMULATIVE



DROPPED CLUBS: 959		5,335 CLUBS OF 9,342 ADDED 1 OR MORE NEW MEMBERS	<u>GENDER DISTRIBUTION</u>	
			MALE	206,744 (73.88%)
			FEMALE	73,042 (26.10%)
<u>DROPPED MEMBERS</u>		CLICK HERE FOR CUMULATIVE MEMBERSHIP DATA		
DECEASED	777		TOTAL FAMILY UNIT MEMBERS 99,736	
CLUB CANCELLED	18,168			
OTHER	29,774		FAMILY MEMBERS PAYING HALF DUES 58,415	
TOTAL	48,719			